

I N C A N T A T I O N S

T A L E S

S P E L L S

A N D R E M E D I E S

F O R

D A T A B A S E A N X I E T I E S

## **OPENING**

Labels nailed on trees.

Trees identified by numbers in the green collection.

Numbers entered in the database.

Database queried to access numbers.

Knowledge retrieved from the computer.

Illness of the green collection manager.

Papers accumulating in red boxes in the office.

Illness infecting the database as threatening blanks

blurring the aliveness and deathness of trees unaccounted for.

alive

alive : excellent condition

alive : good condition

alive : fair condition

alive : poor condition

alive : questionable status

alive : indistinguishable mass

dead

dead : deaccessioned/removed

dead : unable to locate

dead : deaccessioned/removed

dead

alive : indistinguishable mass

alive : questionable status

alive : poor condition

alive : fair condition

alive : good condition

alive : excellent condition

alive

Life

Domain

Kingdom

Phylum  
Class  
Order  
Family  
Genus  
Species  
Subspecies  
Hybrids

Taxonomy. Nomenclature.  
Names to control them.  
Code. Changing code. New code.

A vibration. A fleeting feeling of discomfort.  
Uncertainty  
About the health of the database.  
About the health of the collection.  
About the health of the green collection manager.  
About the sameness of the calculated world and the experienced world.

A database anxiety.  
That radiates from the green collection manager's computer.  
and passes through  
each of us.

That only the rain can cure when the office of the green collection  
manager becomes a shelter.

Speaking the words of the database. Questions. Answers. Questions.  
Answers. Questions. Repeat. Embodying the database. The database in  
one computer in the office. Knowledge from botany, taxonomy, books,  
delivery manifests, other places and other worlds, condensed in the  
office. Humans repeating the words of the database.

"A worldwide social engineering apparatus penetrated into every community."

as told me Suzanne Treister's ironic tarot card to answer my question.

Database anxiety as an unbalance.

Repair in the form of an IF, an algorithmic function and an ontological speculation.

Which entities compose the community?

Are unaccounted for? in the database.

A spiral of concerns about representing faithfully or addressing respectfully

the world out there

the world beneath

and the world within.

Knowledge retrieved from the computer.

Database queried to access numbers.

Numbers entered in the database.

Trees identified by numbers.

Labels nailed on trees.

## **THE BLIND BOTANIST**

Yeah I met the developer at the beginning of this year, and he's just very — because he's almost blind — so he just knows. He was just like: 'OK, just go to that field' — he was talking to the person with the [indecipherable]. 'Just go to that field', because he knew in his head how it all worked. But he - yeah - at this point he's becoming — he only had — he says: 'I'm starting to fall down stairs' and stuff like that. So he's just — but because he couldn't see anymore, he started losing his sight, he said: 'I want to do something else for botany than what I would like to do' — which is working with microscopes and working with flowers and very indepth. And so, that's why he changed towards software

development. For—to try and collect data for botanical gardens, to be sure that there is continuity and longevity in the data in those collections. So that's, yeah.

That's why he developed that?

That's why he started, or that's why he started working in database, for database, because there are a lot of different databases that you can use for plant collections requirement, but this one is just so extensive. And the next one, the next update will be even more extensive because, as I said, you have new regulations about transfer of wild materials so you need certain certificates that you have to be able to, to sign. The people of country of origin, they have to sign it because — that by signing it they say that if you propagate it and you get a profit from it we don't want any part of that profit. So, in the new software you will also be able to produce these type of certificates. Also, if you are exchanging material between gardens, for example, if it goes across borders you will have to take, for example — and also add that information and certificates and everything. And so, those transfer agreements, everything will be important in that.

## **INTENTION-PROPOSAL**

### **Market universalism**

'Market Fundamentalism' is an overarching and universalising condition, in which efforts to remove obstacles to commodification and the movement of capital, to open up of goods and services to markets and the development of financial products are accepted as being 'good'. It is conceivable that all forms of life can somehow be fashioned into financial products and traded on markets, however value predominantly returns to an elite few. What are the implications for forms of life who hold different points of view and practice alternative methods of worlding? Under these conditions is it possible to simply 'keep the market at bay'?

### **Risky business**

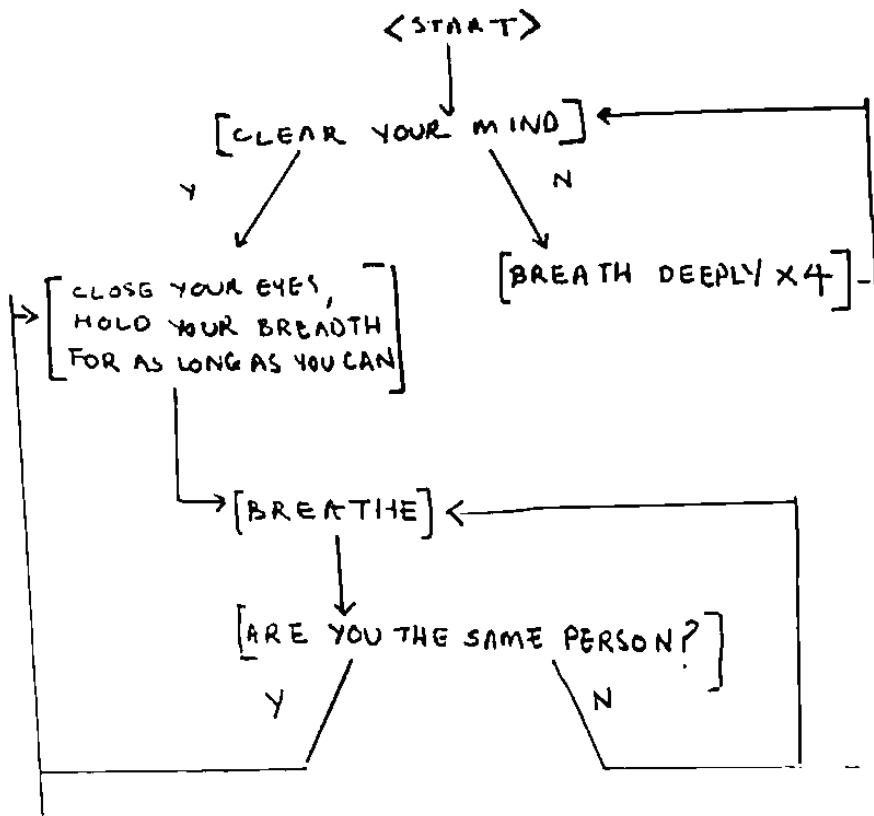
One proposal is that such groups might be able to develop 'New Economic Spaces' (NES) on blockchain secured platforms such as Ethereum. Communities would effectively develop financial products based on their lifestyles and beliefs, issue coins and trade, ultimately returning value to themselves and the groups they are in solidarity with.

Within 'Rights of Nature' discourses, it has been discussed how Indigenous people living 'on Country' contribute to the slowing down global warming. Hypothetically this 'contribution' to managing climate change could be financialised and traded (for example as an offset). Nevertheless, this is a risky business, given that such forms of life would significantly increase their exposure to market fluctuations and in particular to takeovers, 'devaluation' and the biases of investors who currently dominate markets. This emphasises the need for strategic cultural programs to accompany such developments in NES and 'prepare' potential investors to act in accordance with, for example, Indigenous interests.

### **Code(x)**

The proposal is to develop a suite of protocols and syntax — an algorithmic spellbook — that can be used to support alternative modes of living via the proliferation of 'spirits'. These programs facilitate the proliferation of specific desirable entities by fashioning those who are subject to their algorithmic processes into 'vessels', suitable for incorporation.

PROGRAM FOR INDUCING POSSESSION



## **DATASCIENTIST'S REMEDY I**

- add the field private / public in the first page of encoding of new items (default = public)
- go on with the encoding (back log + excel files)
- check private / public statuts of the old plants, and correct the one that should not be published
- add a query to insert new data in batch in the database (from an excel file or a csv, in a given structure).
- add a query to export the data directly in CSV, with a clean lay-out, and the referential
- publish on the web site the public data (with a not to precise location )
- change the licence of the software
- create reporting, for exemple with the number of new occurence/taxon between 2 dates

Then analyse data :

- Mapping of species / places
- Exploratory analysis of data

## **DATASCIENTIST'S REMEDY II**

Go in the garden

Look at the trees

What aspects of the trees are missing in the database (add pictures, add locations, add smells)

Make a graveyard zone in the database, with all the dead trees and their obituaries

Find a way for the trees to access the database (what does a tree knows about the place he is? his surrouding ?)

Find a way for the database to access the trees and exchange information with them (when they change statut, when their is a mistake in the encoded information)

How to include the forest in the collection (delegation of trees? )

How to allow the trees to change place in the domein, via the database?

Via a RfC ? (Request for Change)

Add comments from people and messages to a particular tree in the database, via the website (formulaire)



Write the GDPR of the trees

Help a tree find the address of another tree via the database ? (if they want to keep contact with old friends from the nursery, for example)

### **MAGIC SPELL AGAINST AROUSAL**

Too much passion may cause anger and anxiety in the person who is working the spell, or an unbalanced sexual desire may prevent the sorcerer(ess) from winning over the beloved's heart. Will is at the root of magic, but many times we jeopardize our chances by cultivating an unconscious fear of achieving our goals. The image that came to me is that when one works a love spell, one should keep unbalanced sexual desire, impatience and anger at bay as much as possible. It is necessary to keep the flame of love burning steady, happy and free instead of fearful of success or failure..

Arousal is coming upon me like a wild bull,  
It keeps springing at me like a dog,  
Like a lion it is fierce in the coming  
Like a wolf it is full of fury  
Stay! I pass over you like a threshold,  
I walk right through you like a flimsy door,  
I span you like a doorway.  
I turn back your approach like a hobble,  
I drive out the fieriness of your heart.

$\alpha e$

$$\partial \varphi \diamond + \mathcal{A}E \{ DB, T, H, Tr \} = \int (DB + T) a H$$

$$Tr \spadesuit \odot + \cup \heartsuit (H)$$

$$\int = \hat{\ } + \iint Tr \Omega (H) + Tr a H$$

$\alpha K$

## **THE OLDEST RECORDED TREE IN THE WORLD**

There was one doing his PhD or research on that — and he just went — he bought a brand new corer to try and count the rings. And he went to the park with the forest guard and everything and he tried to take a corer and his corer got stuck, which can happen because they have a different type of tension in the trees and everything. And he asked the forest guard: 'OK my corer got stuck, but what do I do?'. And he said: 'We have a lot of that tree here, just cut it down. It's no problem, you can just take — take the part of the tree and you can count it in the lab.' And he took it with him and already on his first day of counting, he was already — it was already older than the oldest recorded tree in the world. So he found the oldest tree in the world, but he cut it down. So it's actually a really tragic story. I don't know what happened to his PhD afterwards, but it is just one of those stories that you never forget, because that's just horrible if it would ever happen to me.

## **CLOSING**

It was a pleasure to be in the domain  
you are so lovely taking care of!  
Thank you for making an effort to welcome us  
to share both the gardens & forests with us  
and the database!  
Celebrate and promote the knowledge stored in your data  
Share it with the hackers, software developers,  
and data-scientists  
May they also help you in your struggles  
by either giving you advice,  
volunteering to write  
or change some code,  
by analysing the data  
I would like to hear  
what are other ways people can contribute  
and how can we help each other  
through more cooperation.